



Network Exchange 2205BWA

Broadband Wireless Analog Voice and Data Access

- **Primary or Backup for 2/4/8 analog lines over Broadband Wireless Data Services, 1 serial WAN port, 2 Switched Ethernet 10/100 ports**
- **Reduces analog line cost by up to 75%**
- **Advanced Quality of Service mechanisms and Standards compliance ensures superior interoperability, SNMP Alarms**
- **EV-DO Rev A and HSPA**
- **Dynamically allocates bandwidth with voice prioritization**
- **Voice, Fax, Data, and Key systems/PBX Signaling**
- **Supported Carriers**
 - AT&T
 - Sprint
 - Verizon Wireless
 - Alltel
 - Bell Mobility
 - Dobson
 - Rogers
 - Telus

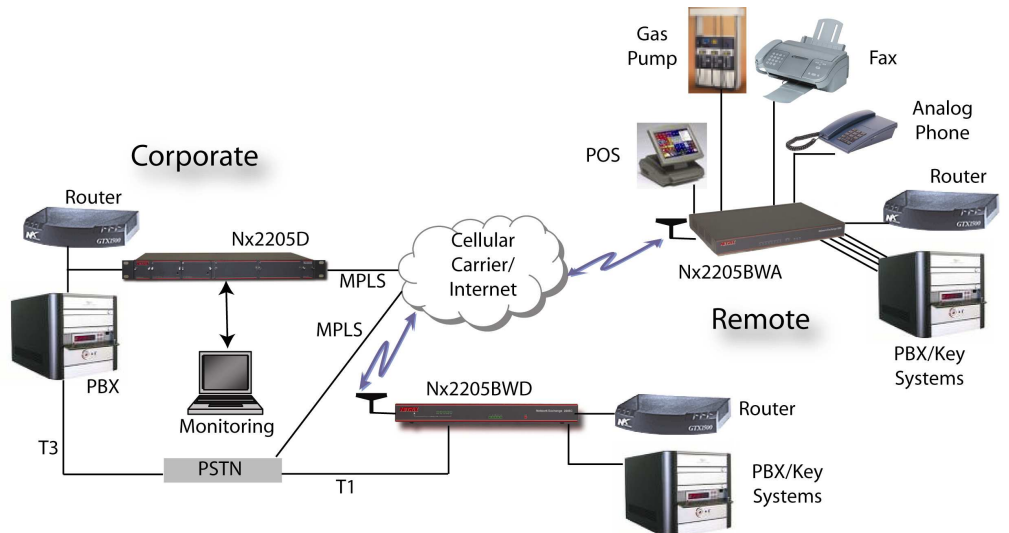
The delivery time to install traditional telephone circuits for new small business enterprises can be months and the operational cost is expensive. The Nx2205BWA uses a broadband wireless data connection (EVDO Rev A or HSPA) to provide the same level of service with significantly less installation time and at a greatly reduced cost.

The Nx2205BWA is an integrated voice and data access router providing broadband wireless data transport using toll quality voice compression merged with other data streams for transmission over a broadband wireless data connection. Analog voice circuits can be connected directly to the unit and merged with other data streams, enabling the realization of benefits previously available only to those willing to make major compromises. The widely deployed proprietary Netrix compression algorithms maintains voice quality indistinguishable from the PSTN, while reducing the bandwidth required. Dynamic bandwidth allocation allows all unused bandwidth to be available for data.

The Nx2205BWA is a true voice and data device supporting all proprietary Key System / PBX signaling systems end-to-end with no loss of functionality, and requiring no reconfiguration of the attached switches.

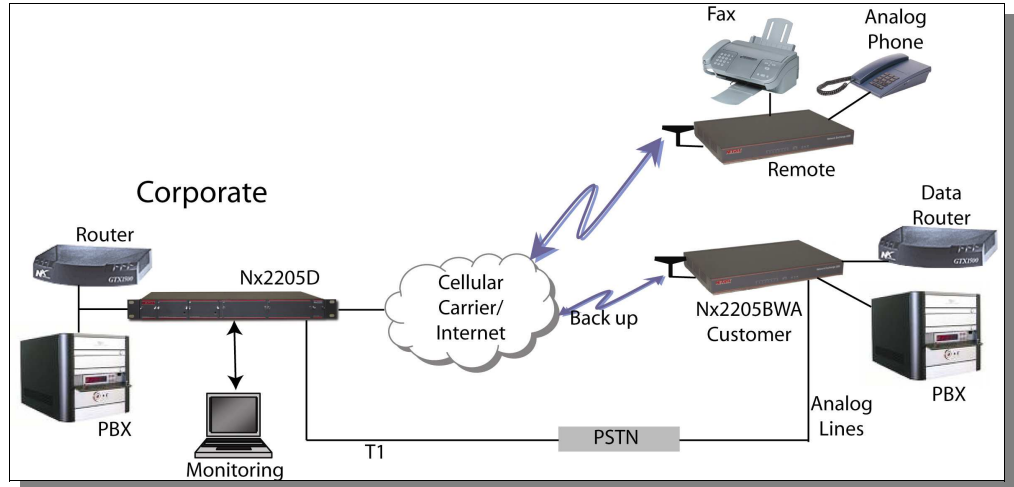
On the network side, the Nx2205BWA's sophisticated traffic management capabilities preserves bandwidth efficiency and voice clarity without sacrificing functionality. Unlike many standards-based systems, the Nx2205BWA reduces packet overhead associated with multiple calls to a common destination, thus optimizing line utilization. Additionally, the Nx2205BWA uses QOS mechanisms (TOS & DiffServ) to ensure voice traffic is given the required priority.

Applications utilizing a large number of Nx2205BWAs as remotes interoperates with the Nx2205BWD. Both are fully manageable from the sophisticated GUI-based NetrixView Network Management System.



NETRIX

Network Exchange 2205BWA



Product Features

Physical Interfaces

- **Analog Voice**
 - Two, four or eight analog voice interfaces
 - Fixed two-wire FXS loop start or two-wire FXO loop/ground start
 - Optional soft configurable two-wire FXS loop start, two-wire FXO loop/ground start and two/four-wire E&M.
 - Signaling types include Wink start, delay dial, immediate start, hoot-and-holler
 - Dialing can be either DTMF or pulse
- **LAN Connectivity**
 - Two integrated switched Ethernet interfaces
 - Auto sensing, 10BaseT or 100BaseT user or hub connection independently on each Ethernet connection
 - RJ-45 physical interface
- **High Speed Serial Interface**
 - One optional high-speed serial interface, internal or external clocking to 2.048 Mbps
 - Software configurable
 - Supports V.24/RS-232/V.35/RS-449, X.21 physical level
 - Speeds from 1200 bps to 2.048 Mbps
- **Async Serial Interface**

Connectivity

- **Voice/Fax**
 - FXS/FXO/E&M
 - H.323, SIP, B2BUA, G.711, G.729a, CELP 4.8/7.4 kbps, ACELP 5.5/8.0 kbps
 - V.27ter, V.29, Group III
 - DTMF or Pulse (10 or 20 pps)
- **IP**
 - RIPv1/2, OSPF, Static Routing, SNMP, SFTM
 - VoIP, H.323, SIP, B2BUA

General

- **Physical**
 - Size: 17.25"W x 10"D x 1.75"H (43.8 W x 25.4 D x 4.5 H cm)
 - Weight: 2.25—3.25 lbs (1.0 kg—1.5 kg)
 - Power: 100-240 VAC, 50-60 Hz 18 VA
- **Environmental**
 - Temperature:
 - Operating - 32°-122°F (0°-50°C)
 - Storage: 23°-158°F (-5°-70°C)
 - Humidity: 20-95% non-condensing
 - MTBF: >65,000 hours @ 86°F(30°C)
- **Approvals**
 - Safety: UL, CSA, IEC 950, EN 60950 (73/23/EEC), CE Mark
 - Telecom: 91/263/EEC, EMC: FCC Part 15 Class A, VCCI Class 1
 - Immunity: 89/336/EEC

EV-DO

- **Radio Features**
 - EV-DO Rev. A with Fallback to EV-DO Rev. 0 and CDMA 1x (not recommended for EV-DO Rev 0 or CDMA 1x)
 - Dual-Band Support (800 MHz cellular and 1900 MHz PCS)
- **Certification**
 - Class 1 Div 2, Parts A,B,C, & D

HSPA

- **Radio Features**
 - HSPA with Fallback to UMTS, EDGE and GPRS (not recommended for UMTS, EDGE or GPRS)
 - Dual-Band UMTS/HSPA (850 MHz and 1900 MHz)
- **Certification**
 - Class 1 Div 2, Parts A,B,C, & D

NSGDatacom

www.nsgdata.com

3863 Centerview Drive
Chantilly, VA, 20151-3232 USA
Phone: +(1) 703 793 2000
Fax: +(1) 703 793 2001

5303 Spectrum Drive
Frederick, MD, 21703 USA
Phone: +(1) 301 662 5926
Fax: +(1) 301 694 6279

The Brackens, London Road
Ascot, Berkshire SL5 8BE, UK
Phone: +(44) 1344 893 000
Fax: +(44) 1344 891 990